

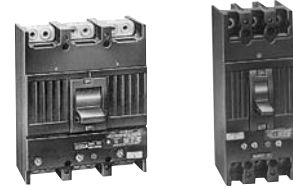
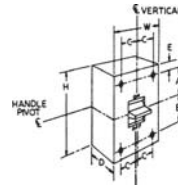
Molded Case Circuit Breakers Industrial Circuit Breakers

Section 3

Page Updated 08 / 2008

Quick Reference Guide 10-1200A Circuit Breakers Thermal Magnetic Trip

Ratings do not apply to molded case switches. The interruption ratings and voltages shown in the table are maximum ratings. A circuit breaker of the type given in the left-hand column may be applied at the given circuit voltage in any electrical distribution system where the available fault current at the load terminals of the breaker does not exceed the value in the table. That circuit breaker type may also be applied at intermediate values of circuit voltage provided the available fault current at the load terminals of the breaker does not exceed the value in the table for the higher value of voltage.



TJJ, TJK, THJK TFJ, TFK, THFK

TEY and TEYF (UL File E-11592; Fixed Thermal Magnetic Trip Unit; CSA LR 57114)

Circuit Breaker Type	Ampere Rating	No. Poles	Maximum Voltage Rating		UL Listed Interrupting Ratings— kA												Dimensions (In.)					Approx. Ship Wt./Std. Pack		
			ac	dc	Vac						Vdc			H	W	D	A	B	C	E				
					120	120/240	240	277	480	600	125	250	500 ¹											
TEY ²	15-100	1	277	125	65	—	14	14	—	—	10	—	—	5 1/4	1	3 1/16	—	—	—	—	—	—	—	
		2	480/277	250	—	—	65	14	14 ⁵	—	—	10	—											2
		3	—	—	—	—	—	—	—	—	—	—	—											3
TEYF ²	15-100	1	277	125	65	—	14	14	—	—	10	—	—	5 1/4	1	3 1/16	—	—	—	—	—	—	—	
		2	480/277	250	—	—	65	14	14 ⁵	—	—	10	—											2
		3	—	—	—	—	—	—	—	—	—	—	—											3

E150 (UL File E-11592; Fixed Thermal Magnetic Trip Unit; CSA LR 57114)

TEB ²	10-100 ³	1	120	125	10	—	—	—	—	—	5	—	—	6 5/16	1 3/8	3 3/8	2 41/64	2 15/64	—	23/32	—	26 lb/24	
		2	240	250	—	—	10	—	—	—	—	5	—										2 3/4
		3	—	—	—	—	—	—	—	—	—	—	—										4 1/8
TED ²	10-100 ³	1	277,347 ⁴	125	—	—	14	10	—	10	—	—	—	6 5/16	1 3/8	3 3/8	2 41/64	2 15/64	—	23/32	—	26 lb/24	
		2	480	250	—	—	18	—	18	—	—	10	—										2 3/4
		3	480,600	500	—	—	—	—	—	—	—	—	—										4 1/8
THED ²	15-30	1	277,347 ⁴	125	—	—	65	—	—	20 ⁶	—	—	—	6 5/16	1 3/8	3 3/8	2 41/64	2 15/64	—	23/32	—	26 lb/24	
		2	480	250	—	—	65	—	25	—	—	20 ⁶	—										2 3/4
		3	600	500	—	—	65	—	18	—	—	—	10										4 1/8
	15-150	3	—	—	—	—	—	—	—	—	—	—	—	—	—	—	—	—	—	—	—	28 lb/8	

F225 (UL File E-11592; TFJ, Fixed Thermal Magnetic Trip Unit; TFK, THFK: Interchangeable Thermal Mag. Trip Unit; CSA LR 40350)

TFJ ²	70-225	2	480	250	—	—	25	—	22	—	10	—	10 1/8	4 1/8	3 13/16	3 7/8	3 7/8	11/16	1 3/16	—	10 lb/1
	70-250	3	600	500	—	—	—	—	—	—	—	10									
TFK ²	70-225	2	480	250	—	—	25	—	22	—	10	—	10 1/8	4 1/8	3 13/16	3 7/8	3 7/8	11/16	1 3/16	—	10 lb/1
		3	600	500	—	—	—	—	—	—	—	—									
THFK ²	70-225	2	480	250	—	—	65	—	25	—	10	—	10 1/8	4 1/8	3 13/16	3 7/8	3 7/8	11/16	1 3/16	—	10 lb/1
		3	600	500	—	—	18	—	—	—	—	10									
TFL ⁷	70-225	3	600	—	—	100	100	—	65	25	—	—	10 1/8	4 1/8	3 13/16	3 7/8	3 7/8	11/16	1 3/16	—	—

J600 (UL File E-11592; TJJ, Fixed Thermal Magnetic Trip Unit; TJK, THJK: Interchangeable Thermal Mag. Trip Unit; CSA LR 40350)

TJJ, TJK4	125-400	2	600	250	—	—	42	—	30	22	—	10	—	10 1/8	8 1/4	3 13/16	3 15/16	3 13/16	1 3/8	1 3/16	—	16 lb/1
		3	—	500	—	—	—	—	—	—	—	—	20									
TJK6	250-600	2	600	250	—	—	42	—	30	22	—	10	—	10 1/8	8 1/4	3 13/16	3 15/16	3 13/16	1 3/8	1 3/16	—	18 lb/1
		3	—	500	—	—	—	—	—	—	—	—	20									
THJK4	125-400	2	600	250	—	—	65	—	35	25	—	40	—	10 1/8	8 1/4	3 13/16	3 15/16	3 13/16	1 3/8	1 3/16	—	16 lb/1
		3	—	—	—	—	—	—	—	—	—	40	20									
THJK6	250-600	2	600	250	—	—	65	—	35	25	—	40	—	10 1/8	8 1/4	3 13/16	3 15/16	3 13/16	1 3/8	1 3/16	—	18 lb/1
		3	—	—	—	—	—	—	—	—	—	40	20									

K1200 (UL File E-11592; Interchangeable Thermal Magnetic Trip Unit; CSA LR 40350)

TKM8	300-800	2	600	250	—	—	42	—	30	22	—	10	—	15 1/2	8 1/4	5 1/2	8 9/16	5 11/16	1 3/8	5/8	—	33 lb/1
		3	—	500	—	—	—	—	—	—	—	—	22									
TKM12	600-1200	2	600	—	—	—	42	—	30	22	—	—	—	15 1/2	8 1/4	5 1/2	8 9/16	5 11/16	1 3/8	5/8	—	38 lb/1
		3	—	—	—	—	—	—	—	—	—	—	—									
THKM8	300-800	2	600	250	—	—	65	—	35	25	—	40	—	15 1/2	8 1/4	5 1/2	8 9/16	5 11/16	1 3/8	5/8	—	33 lb/1
		3	—	—	—	—	—	—	—	—	—	40	22									
THKM12	600-1200	2	600	—	—	—	65	—	35	25	—	—	—	15 1/2	8 1/4	5 1/2	8 9/16	5 11/16	1 3/8	5/8	—	38 lb/1
		3	—	—	—	—	—	—	—	—	—	—	—									

¹ UL listed with poles in series for 500 Vdc ungrounded battery applications.

² UL listed as HACR (heating, air conditioning, and refrigeration).

³ 10 amp not UL listed.

⁴ UL listed/CSA Certified for 10kA @ 347 Vac (TED) and 18kA @ 347V (THED). Also rated 10kA @ 480V but not UL listed.

⁵ 480Y/277 Vac.

⁶ UL listed at 10,000 amps

⁷ No longer available



Molded Case Circuit Breakers Q-Line Circuit Breakers

DIN-Rail Mount
240V Class

Section 3

Product Features

Multi-terminal Configuration Breakers

- 35 mm DIN rail mounting
- Optional front/rear panel mounting kits—THQCFMK, page 3-26.
- Optional load end terminal for up to (4) 0.25-inch quick connects.

Contact local GE sales office for ring terminal configurations—not DIN rail compatible.

THQC, THHQC 120/240 Vac

# of Poles	Ampere Rating	120/240 Vac Interrupting Rating	Product Number	List Price GO-135B	CC Suffix List Price Adder	X2 Suffix List Price Adder
1	15	10kA	THQC1115LL ¹	\$17.25		
1	20	10kA	THQC1120LL ¹	\$17.25		
1	25	10kA	THQC1125LL	\$17.25		
1	30	10kA	THQC1130LL	\$17.25		
1	35	10kA	THQC1135LL	\$17.25		
1	40	10kA	THQC1140LL	\$17.25		
1	45	10kA	THQC1145LL	\$17.25		
1	50	10kA	THQC1150LL	\$17.25		
1	60	10kA	THQC1160LL	\$17.25	\$4.00	\$1.50
1	15	22kA	THHQC1115LL	\$32.50		
1	20	22kA	THHQC1120LL	\$32.50		
1	25	22kA	THHQC1125LL	\$37.50		
1	30	22kA	THHQC1130LL	\$37.50		
1	35	22kA	THHQC1135LL	\$37.50		
1	40	22kA	THHQC1140LL	\$37.50		
1	45	22kA	THHQC1145LL	\$37.50		
1	50	22kA	THHQC1150LL	\$37.50		
1	60	22kA	THHQC1160LL	\$37.50		

15-60A UL Listed HACR (heating, air conditioning and refrigeration)

THQC, THHQC 120/240 Vac, Internal Common Trip

# of Poles	Ampere Rating	120/240 Vac Interrupting Rating	Product Number	List Price GO-135B	CC Suffix List Price Adder	X2 Suffix List Price Adder
2	15	10kA	THQC2115LL ¹	\$37.50		
2	20	10kA	THQC2120LL ¹	\$37.50		
2	25	10kA	THQC2125LL	\$37.50		
2	30	10kA	THQC2130LL	\$37.50		
2	35	10kA	THQC2135LL	\$37.50		
2	40	10kA	THQC2140LL	\$37.50		
2	45	10kA	THQC2145LL	\$37.50		
2	50	10kA	THQC2150LL	\$37.50		
2	60	10kA	THQC2160LL	\$37.50	\$8.00	\$3.00
2	15	22kA	THHQC2115LL	\$77.50		
2	20	22kA	THHQC2120LL	\$77.50		
2	25	22kA	THHQC2125LL	\$77.50		
2	30	22kA	THHQC2130LL	\$77.50		
2	35	22kA	THHQC2135LL	\$77.50		
2	40	22kA	THHQC2140LL	\$77.50		
2	45	22kA	THHQC2145LL	\$77.50		
2	50	22kA	THHQC2150LL	\$77.50		
2	60	22kA	THHQC2160LL	\$77.50		

15-60A UL Listed HACR (heating, air conditioning and refrigeration)

Terminal Configuration

Suffix ²	Line Terminal	Load Terminal
WL	TQAL3A	THQEL3
X2	TQAL3A	N/A
LL	N/A	N/A
CC	TQAL3A	THQECC
None	N/A	THQEL3

Terminal Selection

Type	Wire Range	Product Number	List Price GO-135B
Lug-Line only	14-6 Cu/12-2 Al	TQAL3A	\$1.50
Lug-Load only	14-2 Cu/12-2 Al	THQEL3	\$1.50
Quick Connector-Load only	(4) 14 Cu or (4) 12 Al	THQECC	\$2.50

¹15 and 20 ampere breakers UL listed as SWD (Switching Duty) rated. Suitable for switching 120 Vac fluorescent lighting loads.

²Use additional suffix "BP" (THQC1120CCBP) for bulk pack of 48 poles. Must be ordered in multiples of 48 poles.

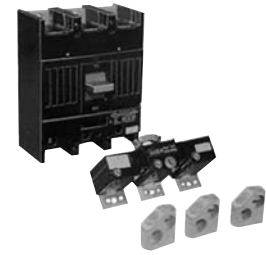
Additional Q-Line mounting accessories listed on pages 3-26 to 3-27.



Publications and Reference: See Section 22 for a complete list of additional product-related publications

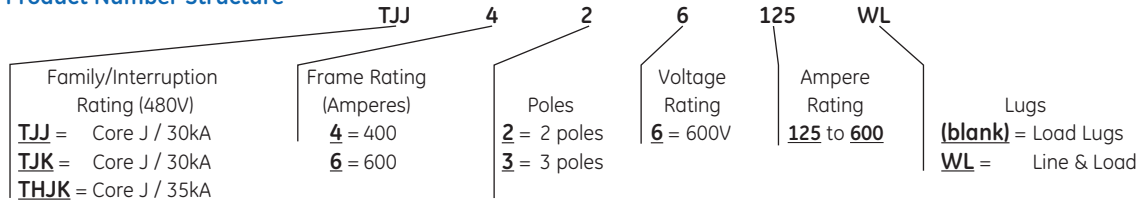
Molded Case Circuit Breakers Industrial Circuit Breakers

125-600A Circuit Breakers
Thermal-Magnetic Trip
J600 Line Circuit Breakers
Types TJJ, TJK, THJK



TYPE TJK

Product Number Structure



Note: This information is provided for interpreting product numbers (it should not be used to build product numbers).

Type TJJ Noninterchangeable Trip, includes Cu/Al Line and Load Lugs, suitable for reverse feed

Ampere Rating	Adjustable Instantaneous Trip Ampere Range		Frame				Terminal Lugs for Front Connection (Cu/Al)	
			2-Pole, 400 Ampere Frame 600 Vac, 250 Vdc		3-Pole, 400 Ampere Frame 600 Vac		Copper/ Aluminum Lugs	Wire Size
			Product Number	List Price GO-135LG	Product Number	List Price GO-135LG		
125	375	1250	TJJ426125WL	\$2118.00	TJJ436125WL	\$2573.00	TCAL43 ³ Included in price of breaker	(1) 6-600 or (2) 2/0-250 Cu/Al
150	450	1500	TJJ426150WL	\$2118.00	TJJ436150WL	\$2573.00		
175	525	1750	TJJ426175WL	\$2118.00	TJJ436175WL	\$2573.00		
200	600	2000	TJJ426200WL	\$2118.00	TJJ436200WL	\$2573.00		
225	675	2250	TJJ426225WL	\$2118.00	TJJ436225WL	\$2573.00		
250	750	2500	TJJ426250WL	\$2118.00	TJJ436250WL	\$2573.00		
300	900	3000	TJJ426300WL	\$2118.00	TJJ436300WL	\$2573.00		
350	1050	3500	TJJ426350WL	\$2118.00	TJJ436350WL	\$2573.00		
400	1200	4000	TJJ426400WL	\$2118.00	TJJ436400WL	\$2573.00		

Types TJK, THJK – Interchangeable Trip, includes Cu/Al Line and Load Lugs, not suitable for reverse feed

Adjustable Instantaneous Trip Ampere Range					Complete Circuit Breaker Includes Line and Load Lugs					Terminal Lugs for Front Connection (Cu/Al) ¹			
Ampere Rating	Range		Standard Product Number	List Price GO-135LG	Hi-Break Product Number	List Price GO-135LG	Frame Only		Trip Unit Only. Use with Standard and Hi-Break Frames	List Price GO-135LG	Product Number (Order 2 per pole)	List Price GO-135LG	Wire Size
	Low	High					Product Number	List Price GO-135LG					
400A Frame – Two-Pole													
125	375	1250	TJK426125WL	\$2118.00	THJK426125WL	\$3085.00			TJK426T125	\$464.00	TCAL43 ³	\$14.00	(1) 6-600 or (2) 2/0-250 Cu/Al
150	450	1500	TJK426150WL	\$2118.00	THJK426150WL	\$3085.00	TJK426F000	\$1598.00	TJK426T150	\$464.00			
175	525	1750	TJK426175WL	\$2118.00	THJK426175WL	\$3085.00	Standard		TJK426T175	\$464.00			
200	600	2000	TJK426200WL	\$2118.00	THJK426200WL	\$3085.00	Frame		TJK426T200	\$464.00			
225	675	2250	TJK426225WL	\$2118.00	THJK426225WL	\$3085.00			TJK426T225	\$464.00			
250	750	2500	TJK426250WL	\$2118.00	THJK426250WL	\$3085.00			TJK426T250	\$464.00			
300	900	3000	TJK426300WL	\$2118.00	THJK426300WL	\$3085.00			TJK426T300	\$464.00			
350	1050	3500	TJK426350WL	\$2118.00	THJK426350WL	\$3085.00	THJK426F000	\$2565.00	TJK426T350	\$464.00			
400	1200	4000	TJK426400WL	\$2118.00	THJK426400WL	\$3085.00	Hi-Break		TJK426T400	\$464.00			
400A Frame – Three-Pole													
125	375	1250	TJK436125WL	\$2573.00	THJK436125WL	\$3675.00			TJK436T125	\$464.00	TCAL43 ³	\$14.00	(1) 6-600 or (2) 2/0-250 Cu/Al
150	450	1500	TJK436150WL	\$2573.00	THJK436150WL	\$3675.00	TJK436F000	\$2025.00	TJK436T150	\$464.00			
175	525	1750	TJK436175WL	\$2573.00	THJK436175WL	\$3675.00	Standard		TJK436T175	\$464.00			
200	600	2000	TJK436200WL	\$2573.00	THJK436200WL	\$3675.00	Frame		TJK436T200	\$464.00			
225	675	2250	TJK436225WL	\$2573.00	THJK436225WL	\$3675.00			TJK436T225	\$464.00			
250	750	2500	TJK436250WL	\$2573.00	THJK436250WL	\$3675.00			TJK436T250	\$464.00			
300	900	3000	TJK436300WL	\$2573.00	THJK436300WL	\$3675.00			TJK436T300	\$464.00			
350	1050	3500	TJK436350WL	\$2573.00	THJK436350WL	\$3675.00	THJK436F000	\$3127.00	TJK436T350	\$464.00			
400	1200	4000	TJK436400WL	\$2573.00	THJK436400WL	\$3675.00	Hi-Break		TJK436T400	\$464.00			
400	600	2000	—	—	—	—			TJK436TM1400 ²	\$558.00			
Mag	1200	4000	—	—	—	—			TJK436TM2400 ²	\$558.00			
Only	350	1000	—	—	—	—			TJK436TM3400 ²	\$558.00			

¹For optional lugs, see page 3-105.

²Not UL listed.

³Alternate lug for 750 kcmil Cu/Al cable, Product Number TCAL47 List Price \$26.00, GO-135LG.

Accessories: See pages 3-39 to 3-45 and 3-96 to 3-108.

